



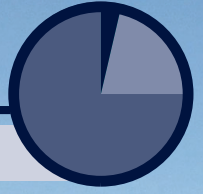
# Radcliffe Road

FLEETWOOD

QUALITY | AFFORDABLE | MODERN

**5% deposit**

+ upto 20% interest-free loan  
+ 75% mortgage



→ **100% yours**



PHASE 1  
HOUSE SPECIFICATION

## 3 bedroom Semi-detached home



A spacious modern family home with drive/garage options and private garden space to the rear. Individual properties may vary, please ask for details.



**SPLENDOUR**  
HOMES

# 3 bedroom Semi-detached home



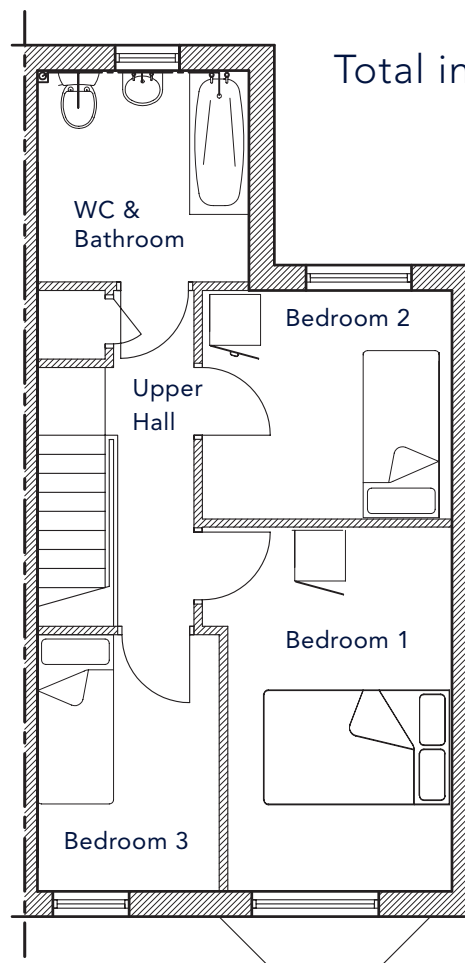
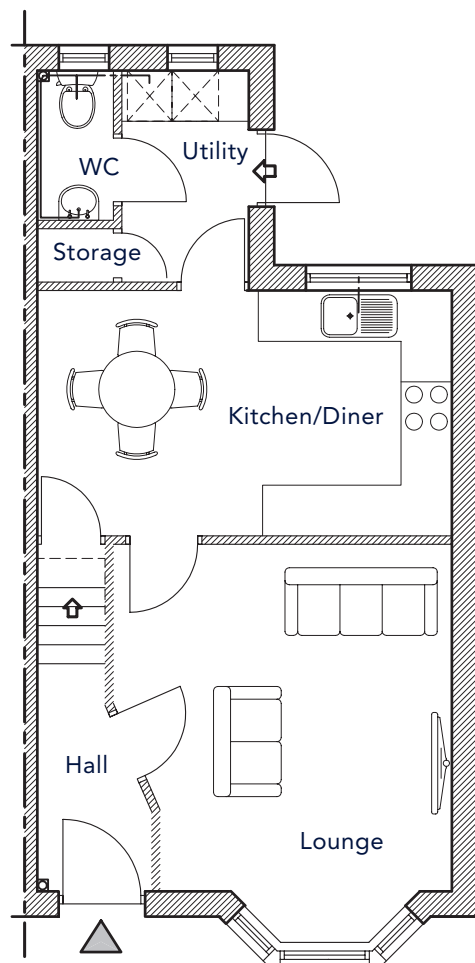
## PHASE 1 HOUSE SPECIFICATION

### Ground Floor

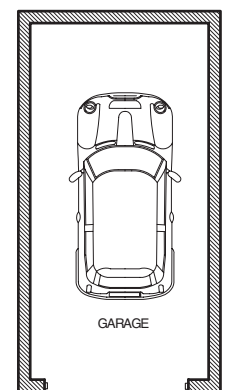
Room	Metric	Imperial
Lounge	3437 x 4152	11ft 3in x 13ft 7in
Kitchen/Diner	4887 x 2900	16ft x 9ft 6in
WC/Utility/Cloaks	2588 x 2586	8ft 3in x 8ft 2in

### First Floor

Room	Metric	Imperial
Bedroom 1	4352 x 2937	14ft 3in x 9ft 8in
Bedroom 2	2937 x 2700	9ft 8in x 8ft 10in
Bedroom 3	3352 x 2150	10ft 11in x 7ft 1in
WC/Bathroom	2526 x 2487	8ft 3in x 8ft 2in



Total internal area = 83.5m<sup>2</sup>



**PLEASE NOTE:** these plans are for illustration purposes only and Splendour Homes reserve the right to change individual features for individual properties from time to time. These plans cannot be relied upon as accurate descriptions and/or form any part of a legal agreement.

SPLENDOUR HOMES ARE BROUGHT TO YOU BY RADCLIFFE DEVELOPMENTS LTD.



**SPLENDOUR**  
HOMES